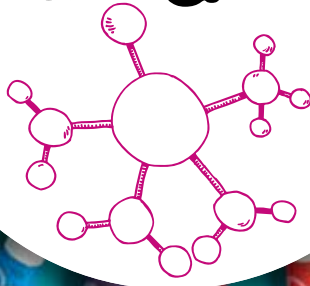


pēbēo

# SUPER GUIDE

pébéo

# Pébéo awakens art !!



Pébéo is a French brand from the south of France created by Claudius Chaveau, which has been making colours and materials for young and older artists for over 100 years !

Over time, the brand has become a reference for many young artists and their parents who care about using high-quality products that stand the test of time.

When it was founded in 1919, the company was called «La Pébéo», named after the molecule used in paint production-lead monoxide, or «Pbo». At that time, ready-to-use paints did not exist.

In the 50's, Pébéo introduced its school range. The gouache pans were a real success, quickly followed by gouache in tubes, to the delight of students.

At the same time, Claudius Chaveau met Célestin Freinet, a teacher and founder of the Modern School, whose teaching approach was based on awakening the child's potential.

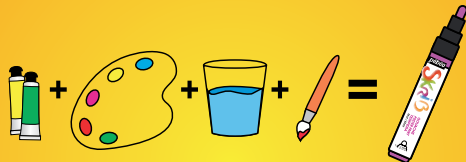
Many years later, in 2016, Pébéo innovated once again for children, taking inspiration from the trend of artist markers in street art and customization by creating the SKRIB.

1919



2016  
aujourd'hui

SKRIB alone replaces paint tubes, palette, water and brush. A clever, practical and clean solution that continues to delight both young and old !



Together, they imagined liquid gouache, and Pébéo became a benchmark in the field of school paints and more broadly in creative hobbies.

A marker adapted to small hands, filled with paint !





# SUMMARY



WHAT IS A SKRIB ? .....	Page 5
HOW DOES A SKRIB WORK ? .....	Page 7
WHICH SKRIB FOR WHICH USE ? .....	Page 8
FOCUS ON WATERCOLOR SKRIB .....	Page 9
WHAT IS THE DRAWING GUM MARKER ? .....	Page 11
HOW DOES THE DRAWING GUM MARKER WORK ? .....	Page 12
INSPIRATION DRAWINGS AND COLORING PAGES .....	Page 14
THE SUPER TUTORIALS .....	Page 31
TUTORIALS <b>SKRIB</b> <b>ACRYLIQUE</b> <b>ACRYLIC</b> .....	Page 32
TUTORIALS <b>SKRIB</b> <b>AQUARELLE</b> <b>WATERCOLOR</b> WITH AND WITHOUT drawing gum / gomme à dessiner .....	Page 45
TUTORIALS <b>SKRIB</b> <b>GOUACHE</b> <b>POSTER PAINT</b> WITH AND WITHOUT drawing gum / gomme à dessiner .....	Page 54



TUTORIALS

TUTORIALS



Shine





# What is a SKRIB?



The SKRIB is a **marker filled with paint**; either gouache or acrylic. In the language of color, it's called a paint marker.

From the Latin "**scribere**", to write. The name of these markers is inspired by the profession of the "scribe", a person who practiced writing in ancient times. It's a historical nod, since of course, its possibilities are far greater!

A **nomadic** tool to take everywhere.

12 opaque, vibrant colors and metallic shades.

2 nib sizes: 4mm for **solid fills** and 0.7mm (black only) for fine details.

You can easily **layer, blend, and dilute** just like with tube paint!



A marker whose size **and nib options** are designed for children's use.

Wow!

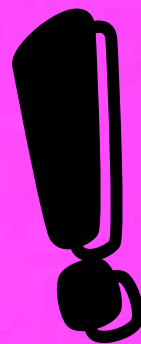
REAL  
PAINT  
INSIDE !!!



**pēbēo**

I am  
**SKRIB GOUACHE**

My finish is matte, I'm  
blendable, watercolorable,  
and erasable\* even after  
drying !



I am  
**SKRIB ACRYLIC**

My finish is  
glossy, I stay  
permanent after  
drying and I resist  
water extremely well !



**Gouache or Acrylique ?!**

\* 100% erasable over time after drying on glass/window surfaces with water.

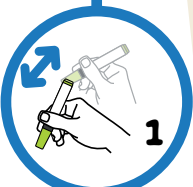


# How does a SKRIB work?

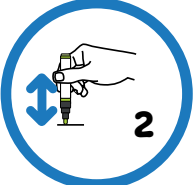
t'es  
génial

awesome  
Too!

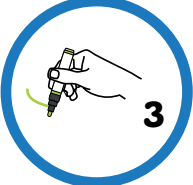
magic!



1



2



3



4

- A paint marker means «**priming**». That means getting the color to flow into the nib. To do this, shake the marker with the cap closed, then press the nib several times on a separate surface until the color flows down and saturates the nib. Careful - don't let too much paint come out or it might drip !  
You can repeat the SKRIB priming step during your creation to keep a good paint flow.

- Always **close the cap** properly after using the marker. You should hear a "click".

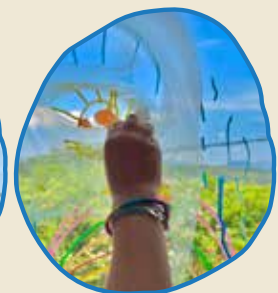
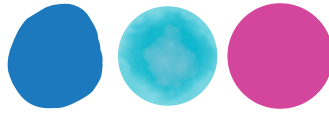
- If you've "dirtied" the nib while mixing, no worries! Just repeat the priming on a scrap surface to bring clean color back into the nib.

- If your nib gets too worn over time, simply flip it over (thanks to its double rounded tips) and your marker will feel brand new again! \*

- **Cleaning** should be done with soapy water before the paint dries.

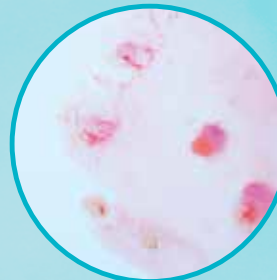


# Which SKRIB for which use?



PAINTING - DRAWING - COLORING - STAMPING

TEMPORARY CREATIONS ON WINDOWS



RAINBOWS

DILUTED DRAWINGS

ABSTRACT BACKGROUNDS

WATER DRAWINGS



PAINTING - DECORATING - CUSTOMIZING - GRAPHICS

PERMANENT CREATIONS ON MULTIPLE SURFACES



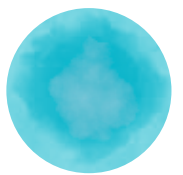
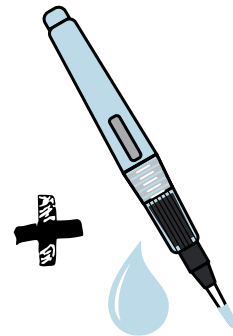
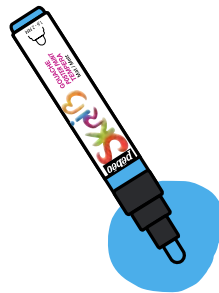
# Focus SKRIB

AQUARELLE  
WATERCOLOUR

What we call the watercolor technique is simply the use of the **SKRIB gouache** with a brush and **water**.



ROAR!!!

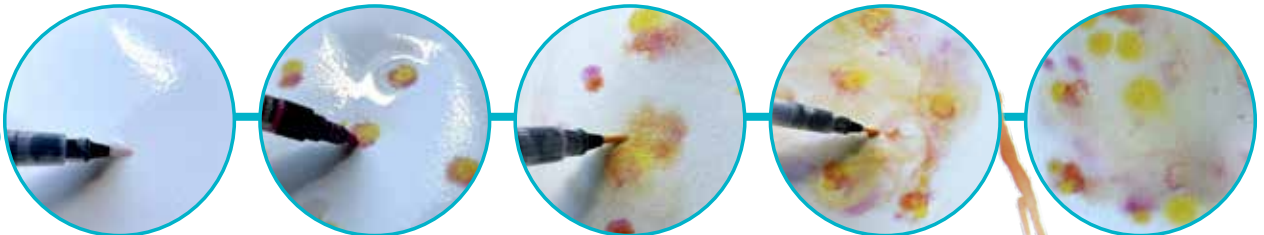


Several techniques are available to you, here are a few :

WATER  
DRAWING



ABSTRACT  
BACKGROUND



DILUTED  
DRAWING



RAINBOW



pēbēo





# What is the Drawing Gum marker ?



Drawing gum is a **liquid masking gum** that allows you to create reserved areas on surfaces like paper, canvas, plastic or even wood.

Pébéo was the **first manufacturer to develop this product** in the early 70s, and it is now used worldwide by little ones (at school or at home) as well as by professional artists! An intergenerational product.

Drawing Gum **is only used under water-based paints in thin layers**: diluted gouache, gouache in SKRIB, water-based stained glass, watercolor ink, India ink...



Stamp on paper



Gouache on cardboard



India Ink on wood



# How does the Drawing Gum marker work?



- The Drawing Gum marker works like a SKRIB – you need to prime it to get the blue liquid flowing to the nib. Its color is blue so you can see your drawing on the surface (clever !).
- If any residue builds up on the nib, you can remove the excess with your fingers. If your nib gets too damaged, just flip it over (thanks to its two rounded ends) and your marker will be like new again !
- Always close the cap tightly after using the marker. You should hear a “click”. Then store it horizontally until the next use.
- Drawing Gum must be removed after a maximum of one week.
- It is not recommended to use SKRIB GOUACHE metallic shades over Drawing Gum.



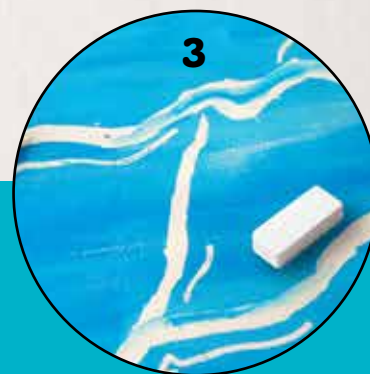
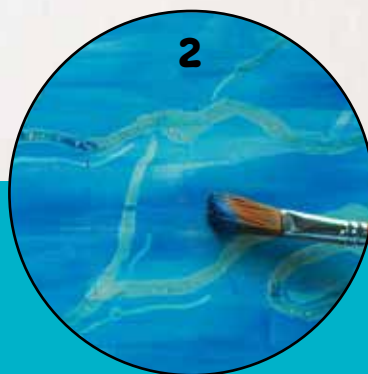
1 Think about the areas of your creation that you do NOT want to color.  
Create those zones with your marker and let it dry.



2 Apply your colors without worrying about those reserved areas - the Drawing Gum will “protect” them like a barrier !



3 Wait until your colors are completely dry (very important - don't be too impatient !) then remove the reserved zones using an eraser and discover your magical creation !





**pēbēo**

**4mm  
nib**

**0,7mm  
nib**

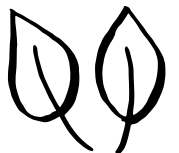
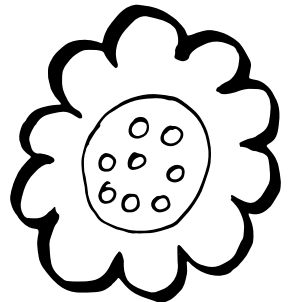
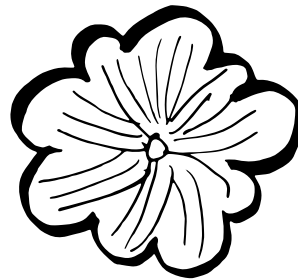
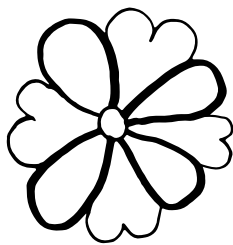
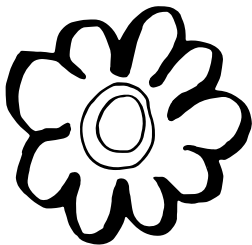
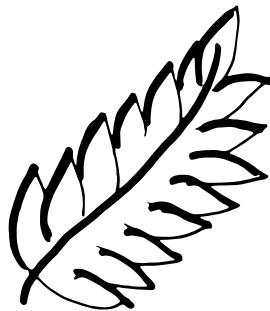
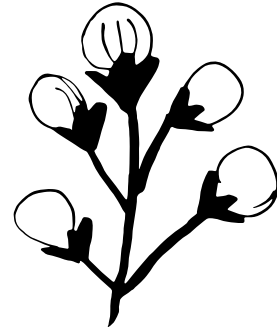
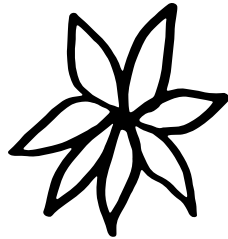
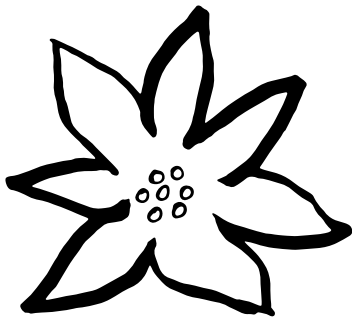
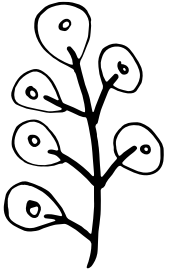
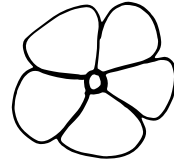
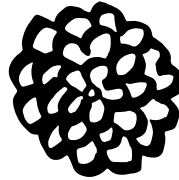
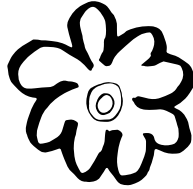
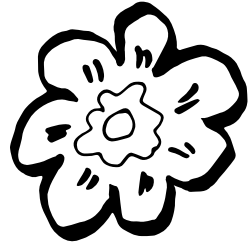
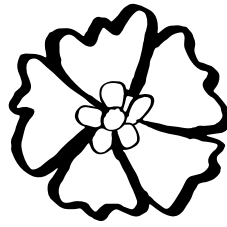
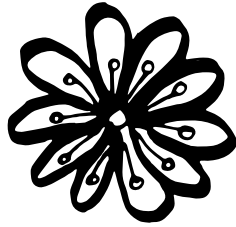
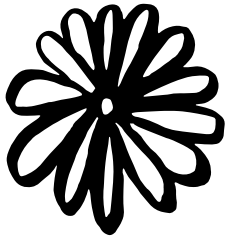


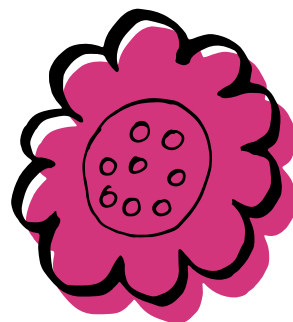
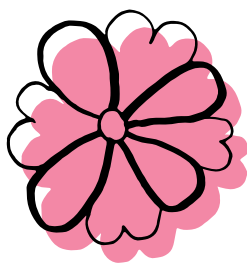
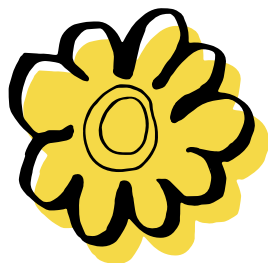
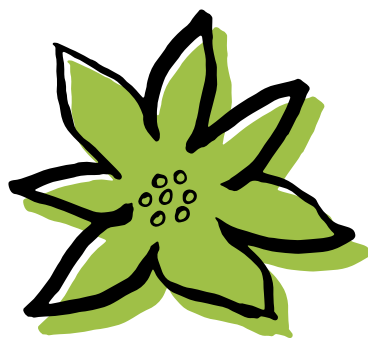
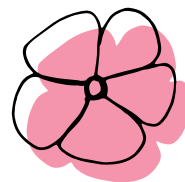
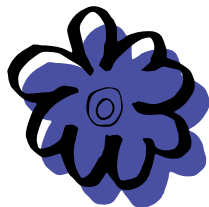
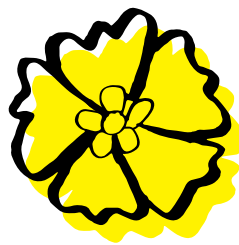


## INSPIRATION DRAWINGS AND COLORING PAGES

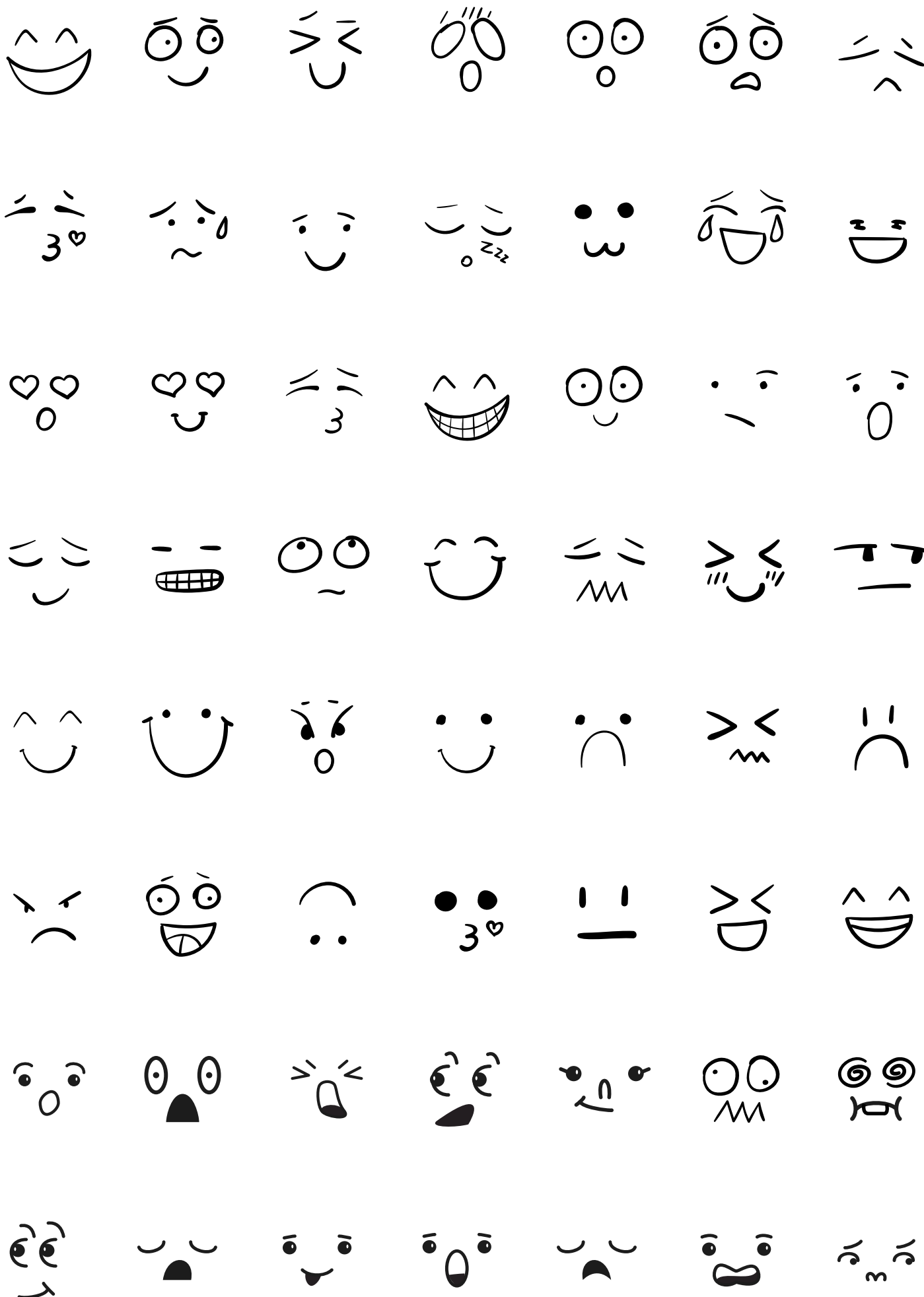


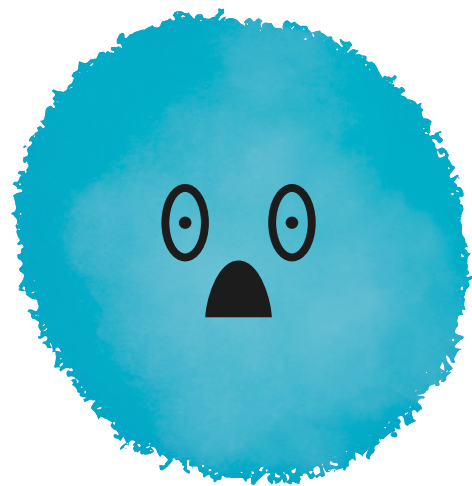
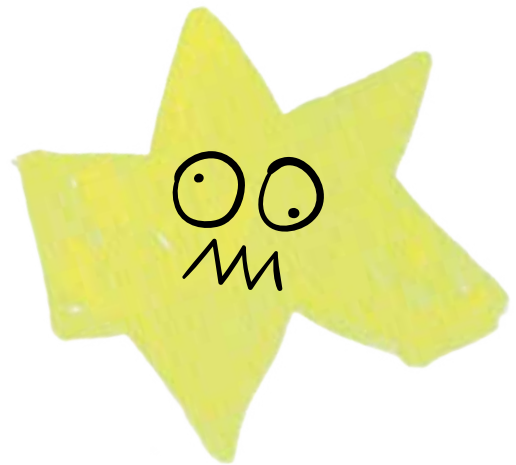














**A B C D E**

**F G H I J**

**K L M N O**

**P Q R S T**

**U V W X Y Z**

**0 1 2 3 4 5 6 7 8 9**

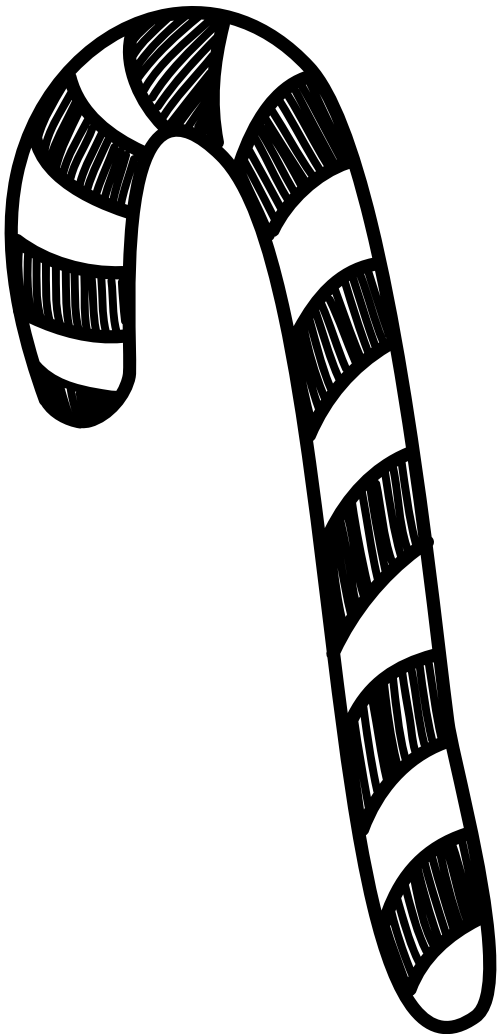
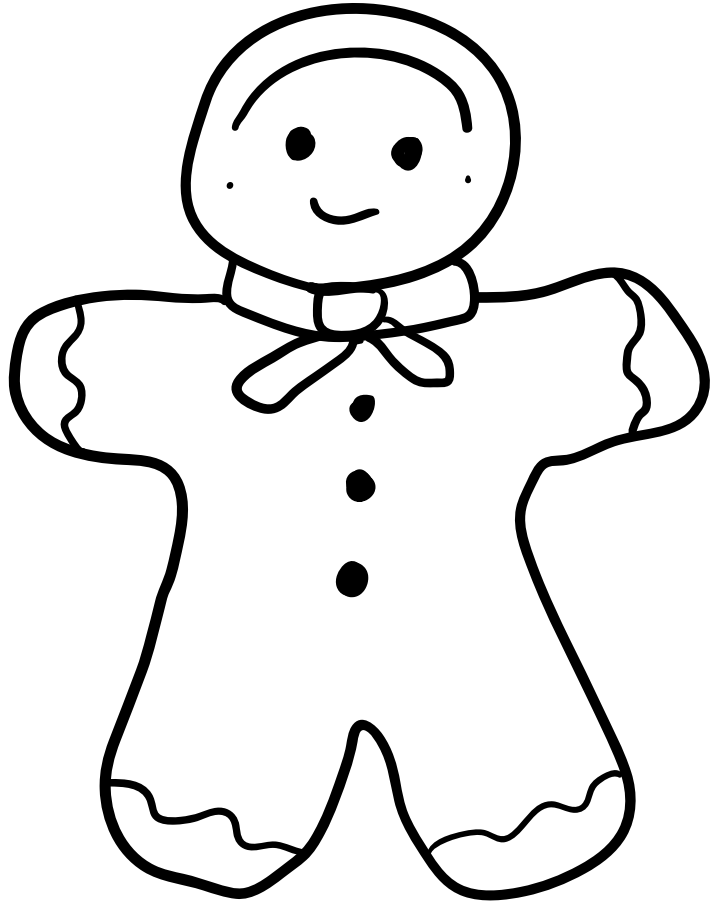
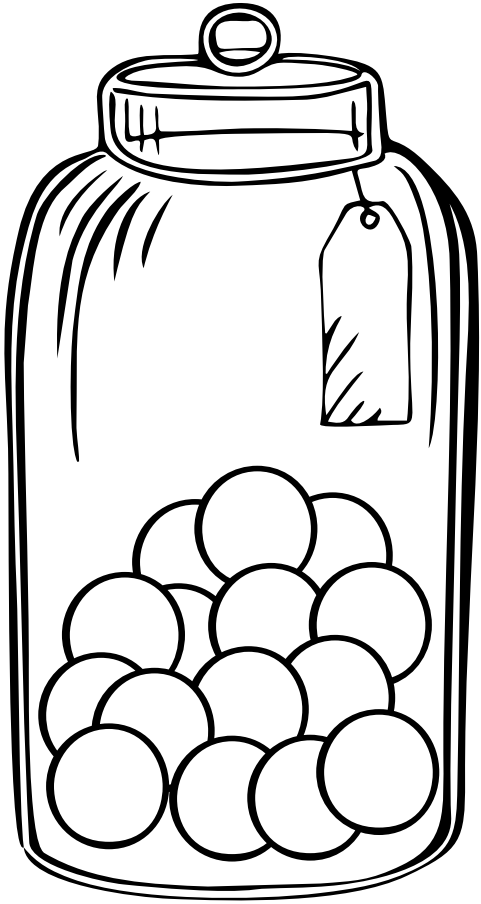
stay  
cool

Thank  
You

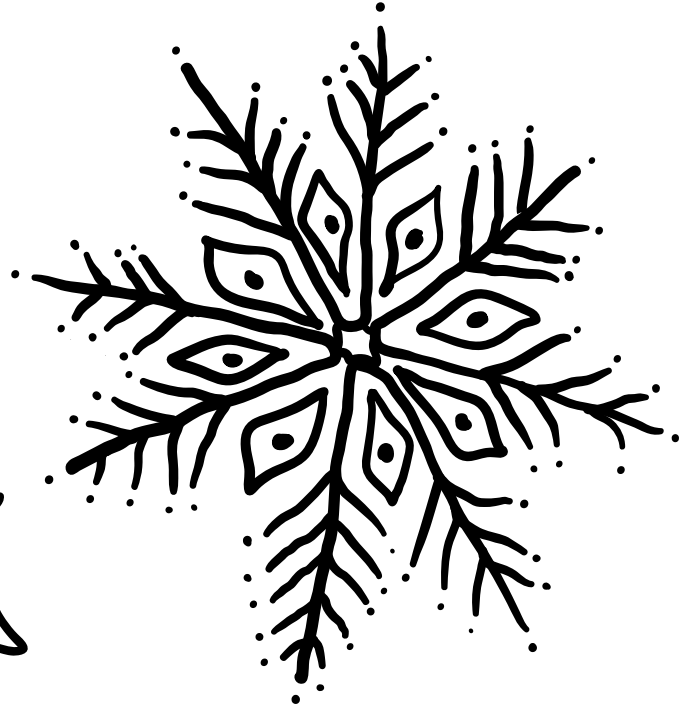
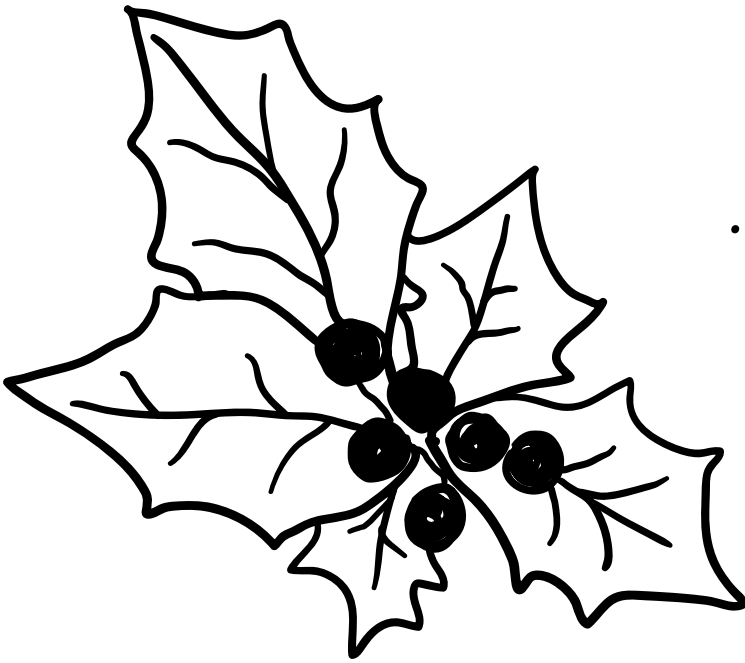


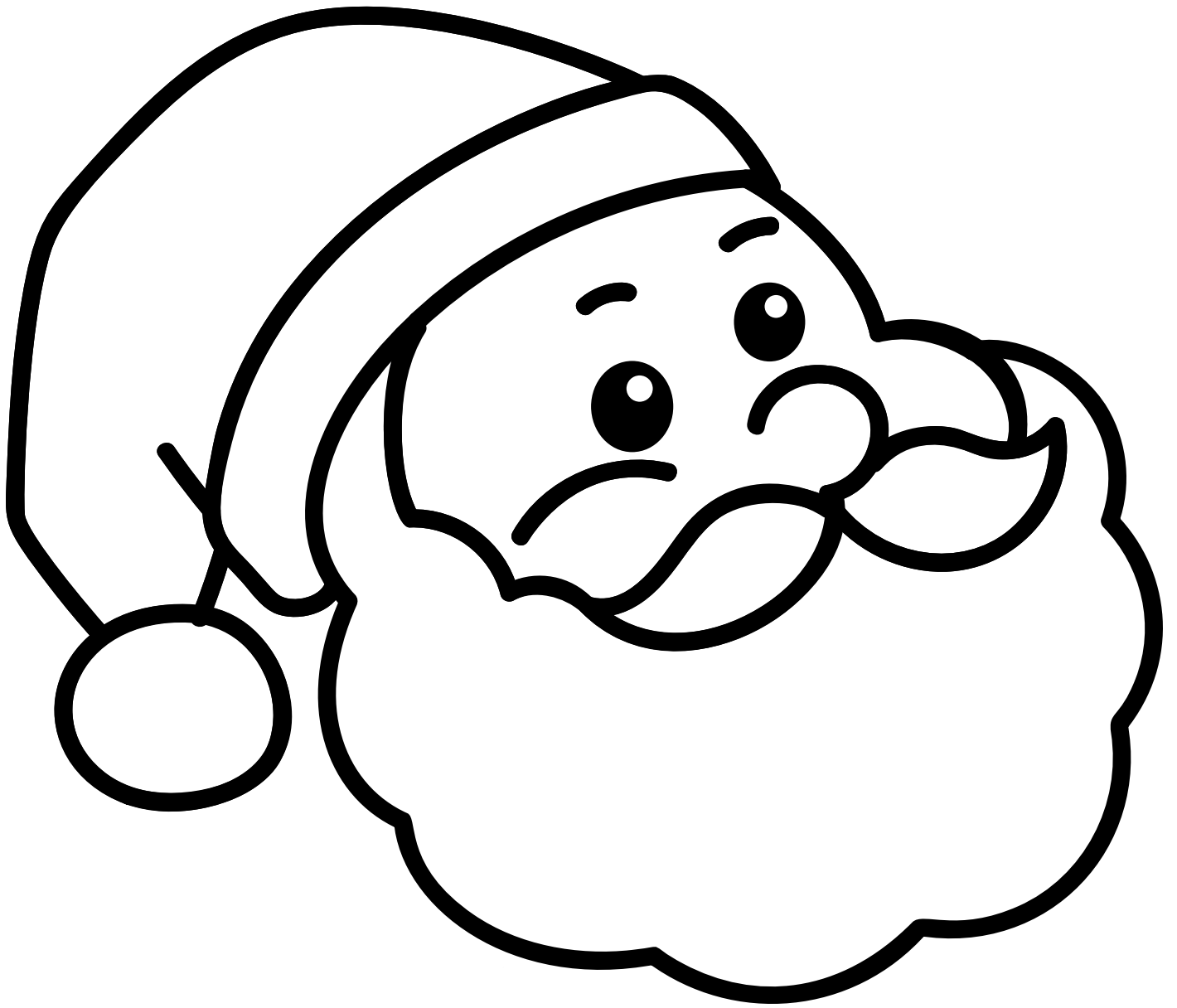






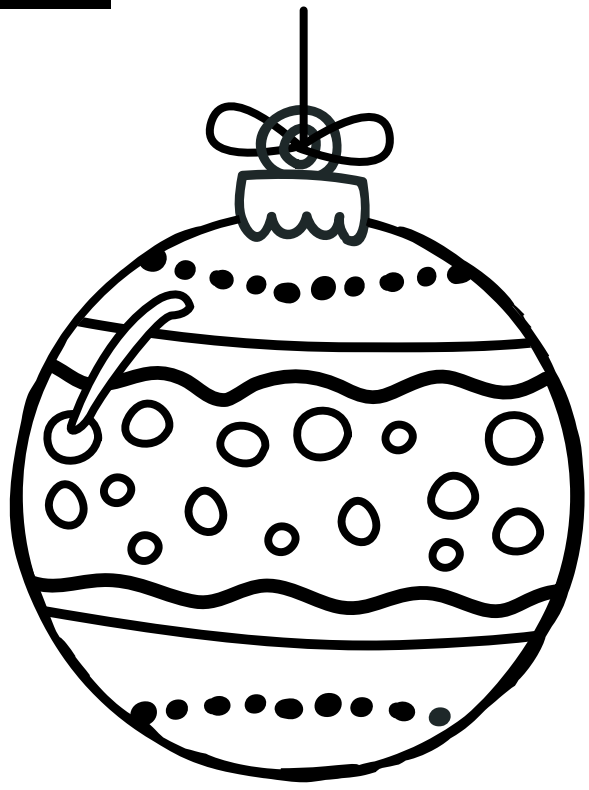
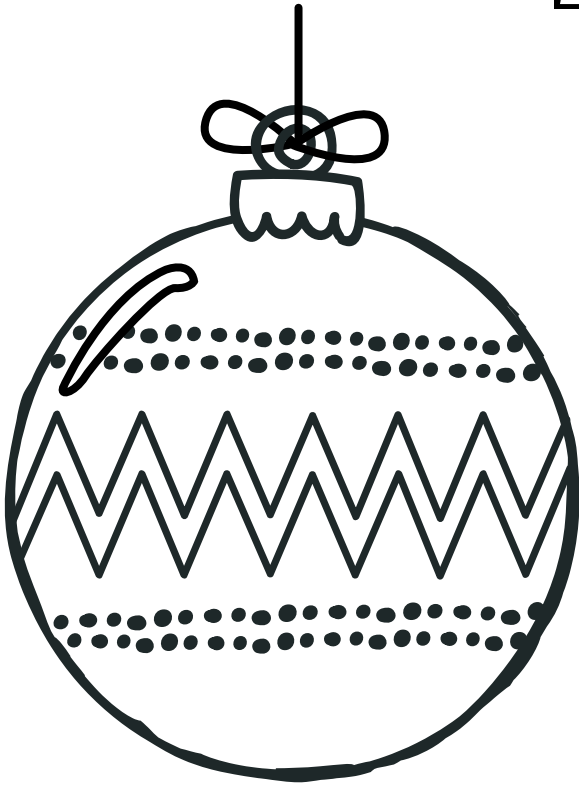






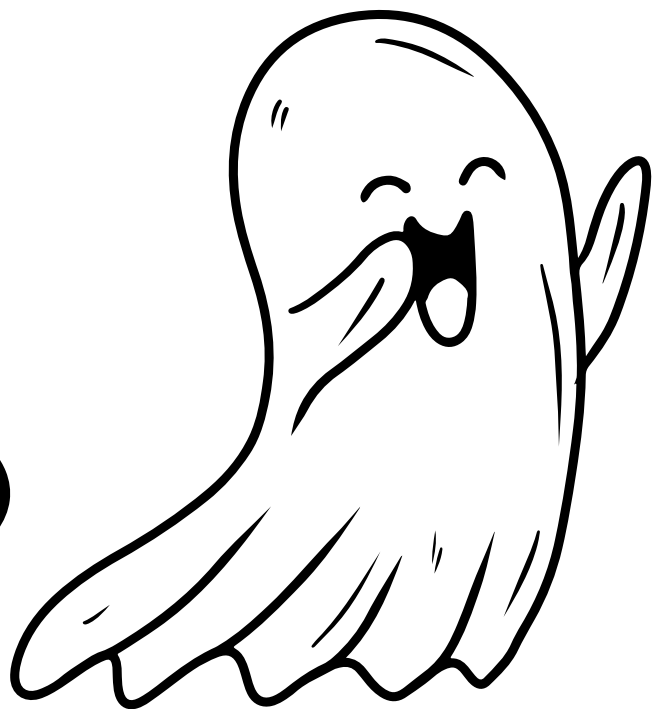
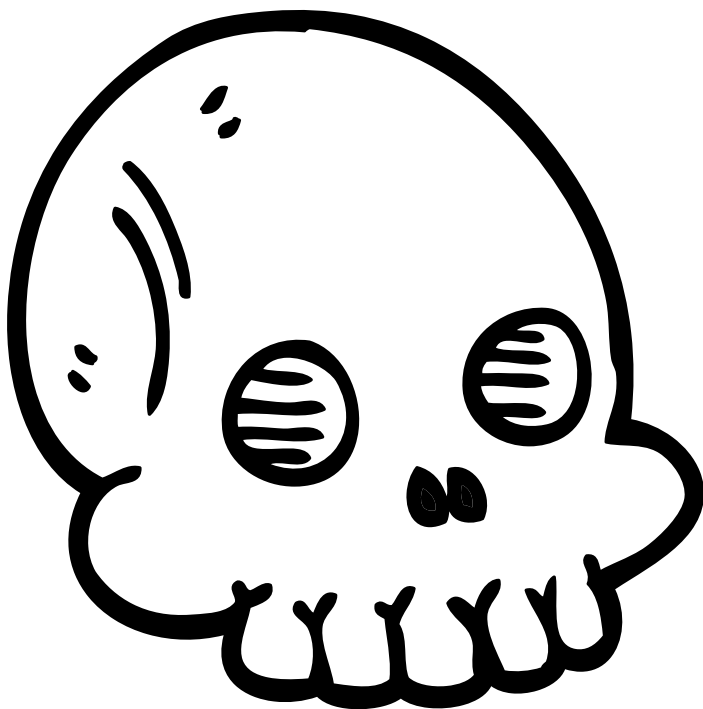
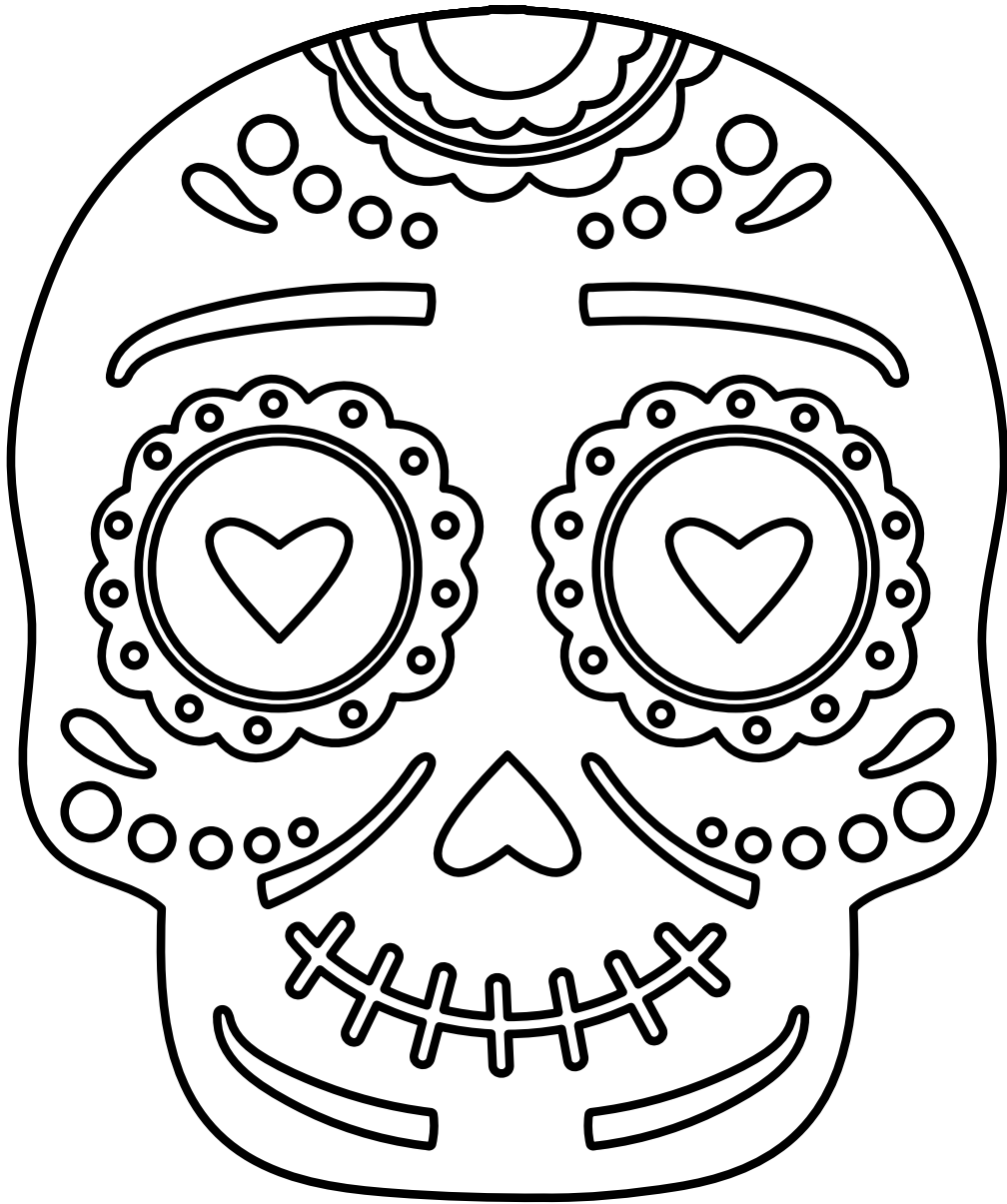
ho! ho! ho!

**pêbêo**



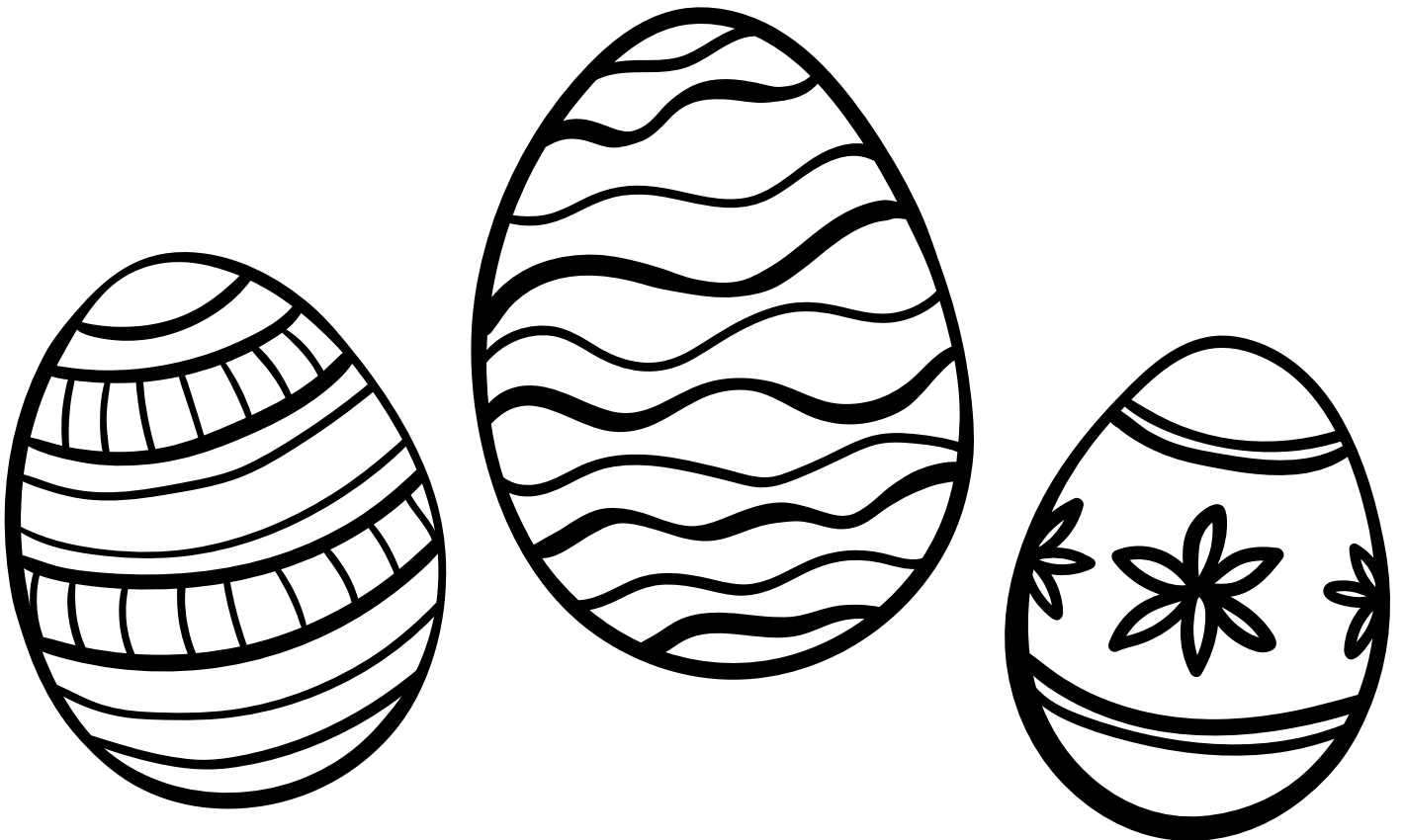
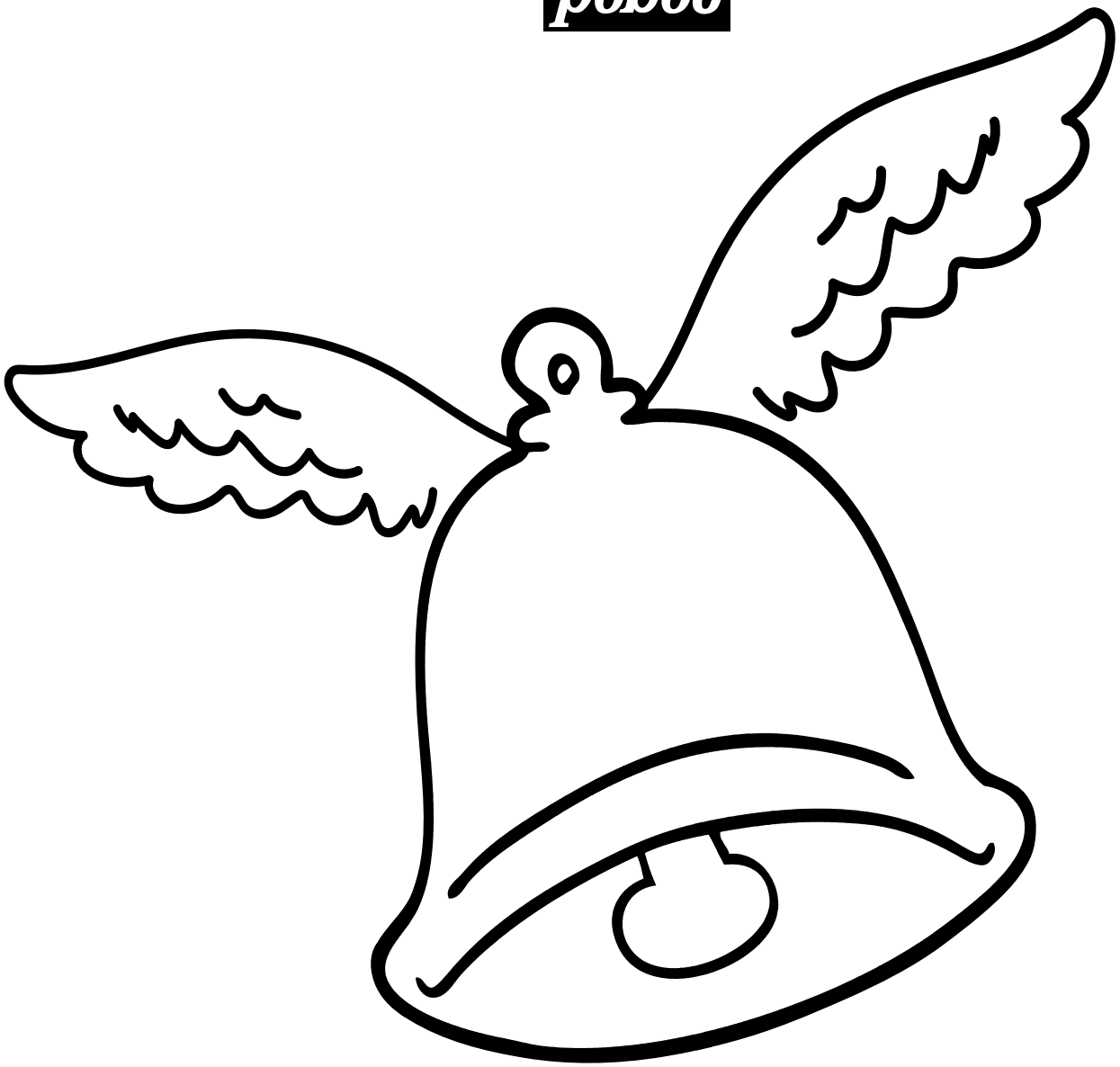




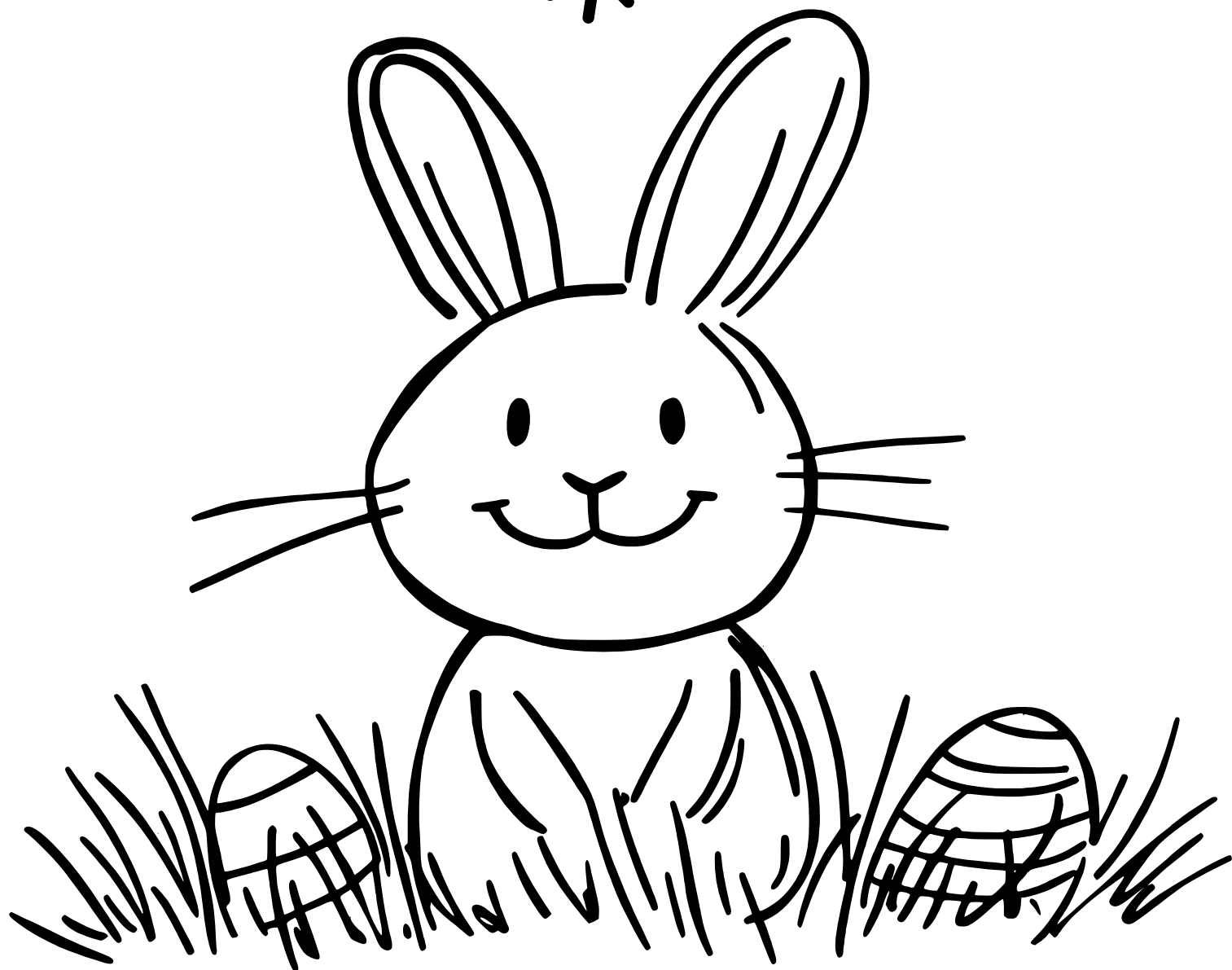
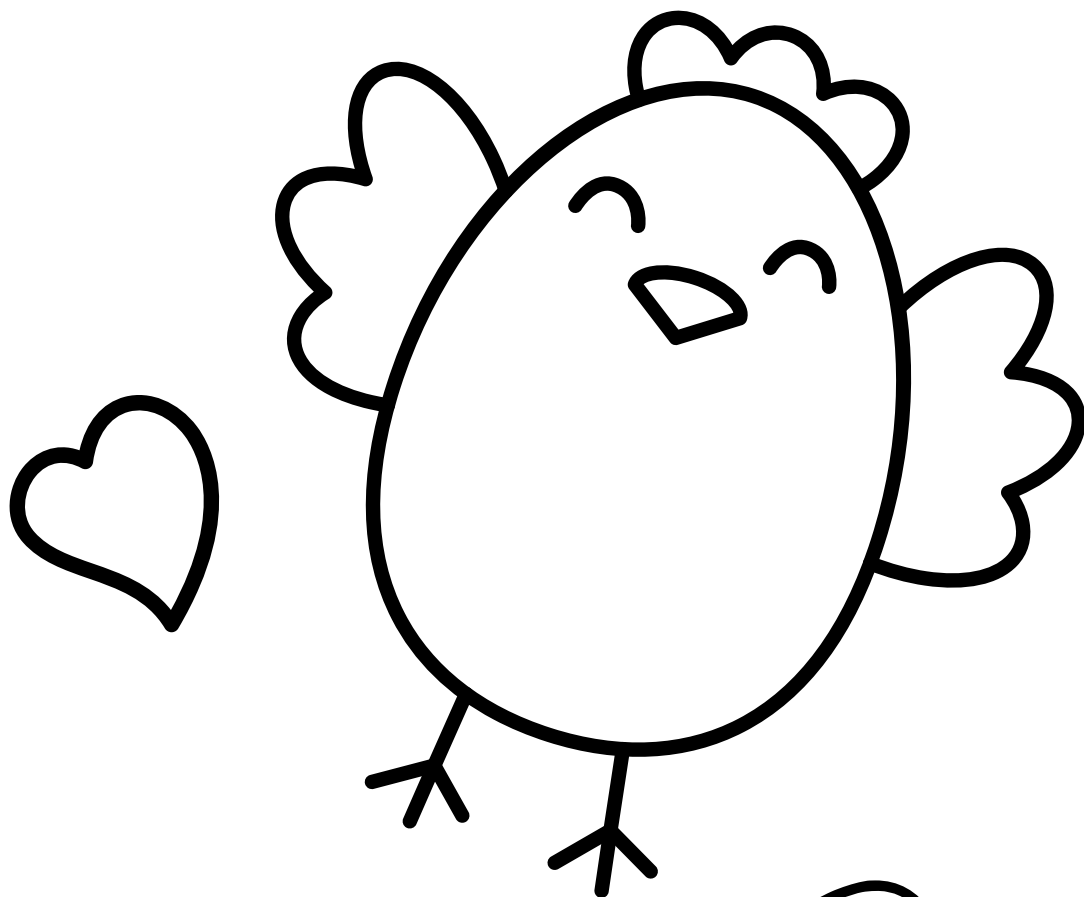








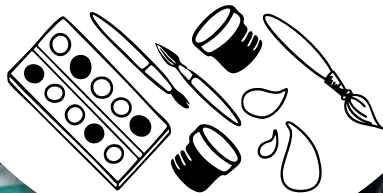
*pêbêo*



**pēbēo**



# LES SUPER TUTORIALS



With tons of  
ideas to  
inspire us!



NOW IT'S  
OUR TURN  
TO PLAY!



pébéo

**SKRIB**  
ACRYLIQUE  
ACRYLIC

8+

# SKRIB Acrylic Tutorials



# 1. HERBARIUM PUZZLE

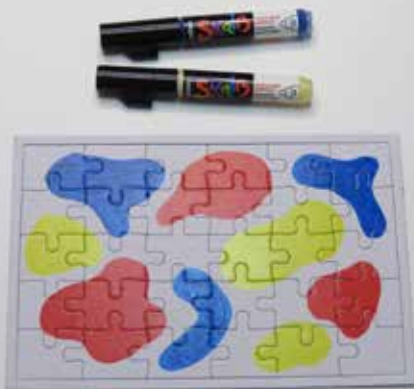
## Your materials

SKRIB acrylic  
white, red, purple, blue, yellow, black

White puzzle to decorate



1



Draw simple color shapes, more or less spaced apart.  
Let dry for 10 minutes.

2



Add floral patterns overlapping both the shapes and the white parts to create a graphic effect. Let dry for 5 minutes. Get inspired by the Super Guide for patterns.

3



Add details and patterns with black and white SKRIB.  
For example, dots on some of the flat colored areas.



## 2. TOO COOL TRIPTYCH

### Your materials

SKRIB acrylic  
white, red, purple, blue,  
yellow, neon pink, neon yellow,  
orange, green, gold, black

3 canvases 20x20cm

Pencil



Sketch the base of the drawing in pencil, placing the canvases side by side so the designs continue across all three. Get inspired by the Super Guide for patterns.



Color in the different shapes. Let dry for 5 minutes.



Add details, shadows, and layer some colors.



# 3.

## SUPER COOL SNEAKERS

### Your materials

SKRIB acrylic  
white, red, purple, blue,  
neon yellow, neon pink, orange,  
green, gold, brown, black  
Faux leather sneakers



1 Draw simple colorful shapes and spots on both sides.  
On the front of the sneaker, make a half-circle in neon yellow. Let dry for 10 minutes.



2 On the other side.



3 Color the laces alternating neon pink and neon yellow, blending them together for a tie-dye effect.



4 Add texts and patterns by layering colors. Get inspired by the Super Guide for the designs.



5 Finish the smiley.



6 Write your name in two colors in a graphic style on the back of the sneaker.

**TIP**

You can varnish your sneakers with acrylic varnish or one designed for leather.

# 4. ORIGINAL PEBBLES

## Your materials

SKRIB acrylic  
white, red, purple, blue,  
yellow, neon pink, orange,  
green, gold, black

3 pebbles



1 Draw the base shapes. Let dry 10 minutes between each layer.



2 Get inspired by the Super Guide for the patterns.



3 Play with color and drawing variations.



...



5 Play with color and drawing variations. ...



# 5.

## COLORFUL EARRINGS

### Your materials

SKRIB acrylic  
purple, orange,  
red, gold

Wooden earrings in 3 parts

Pliers



Color each part of the earrings in warm tones. Let dry for 5 minutes.



Layer simple patterns like lines or dots.



Assemble the earrings.



Try color and design variations with cool tones.



# 6. JEWEL BOWLS

## Your materials

SKRIB acrylic  
metallic shades

Clay bowls



1  
Draw small, simple patterns in the center of the bowl.



2  
Use the gold SKRIB to decorate the edge of the bowl.



3  
Create several versions to display them together.



4  
...

# 7. WORDS BOX

## Your materials

SKRIB acrylic  
white, black, red,  
purple, blue, yellow

Recycled plastic box



1  
Clean and degrease the box if needed before applying the colors. On one side, draw a rainbow. Let dry for 10 minutes.



2  
On the other side, draw the clouds. Let dry for 10 minutes.



3  
Use the black SKRIB to draw patterns and details.



4  
Decorate the other sides.



5  
Decorate the other sides.



6  
Decorate the lid, and fill the box with small papers containing "little kind words".

## TIP

Be careful not to press too hard with the 0.7mm black nib when layering, to avoid scratching the paint underneath.

# 8. PENCIL HOLDERS

## Your materials

SKRIB acrylic metallic shades

Recycled tin can  
Black acrylic paint  
Paintbrush



1  
Cover the tin can with one or two coats of matte black acrylic paint. An acrylic gesso primer is ideal. Let dry for 10 minutes.



2  
Decorate the can with color stripes of various widths. Let dry 10 minutes.



3  
Use the black SKRIB to draw patterns and details.



4  
Add layered patterns over the colored stripes.

**TIP**

Be careful not to press too hard to avoid scratching the top layers.



# 9. ART JOURNAL #1

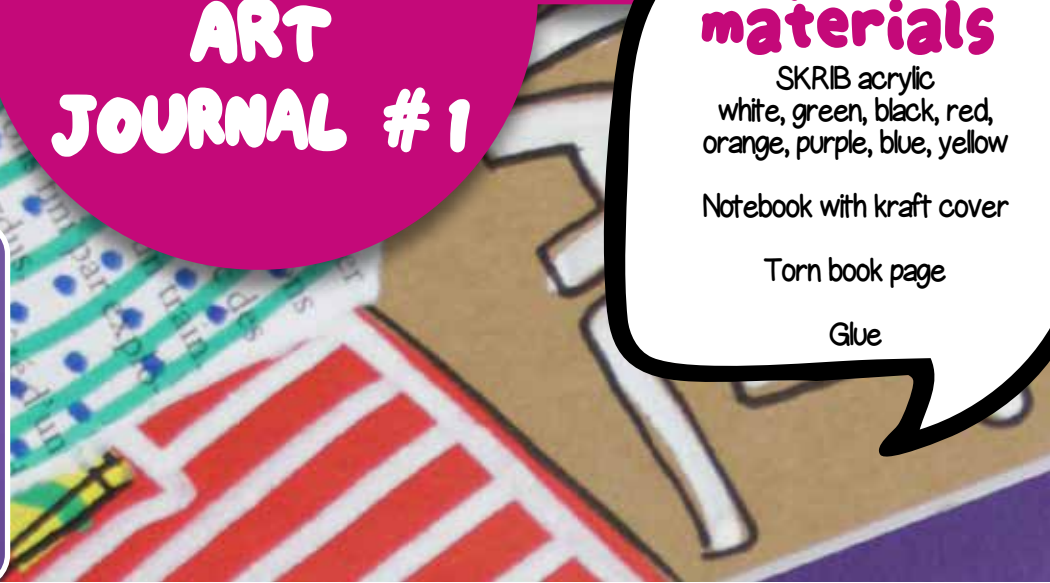
## Your materials

SKRIB acrylic  
white, green, black, red,  
orange, purple, blue, yellow

Notebook with kraft cover

Torn book page

Glue



1



On a piece of torn book page, draw patterns using SKRIB markers. Let dry for 5 to 10 minutes, then layer other colors and patterns.

2



On the notebook cover, draw simple shapes with the SKRIB markers. Leave some empty spaces. Let dry for 5 to 10 minutes, then go over the areas again for perfect coverage.

3



Continue decorating, add text and layered drawings to create contrast. Simple geometric shapes are enough.

4



Glue the decorated book page onto the notebook.



# 10. ART JOURNAL #2

## Your materials

SKRIB acrylic  
white, green, black, red,  
orange, purple, blue, yellow

Notebook with thick pages

Photographs

Torn book page

Glue



1 On a double page, decorate with simple colored shapes. Let dry for 5 to 10 minutes.



2 Continue decorating and layering colors and patterns.



3 Decorate the torn book page.



4 Glue the decorated book page, glue the photos, add texts and pieces of masking tape.

## TIP

The notebook should reflect your personality and passions. Organize your creation based on what you want to show: travel photos/memories, drawings...

# 11. ADVENT CALENDAR

## Your materials

SKRIB acrylic  
white, green, black, red, gold  
Kraft and white paper pouches  
Scissors  
String  
A large branch  
Stapler



1 On the pouches, use SKRIB acrylic markers to draw Christmas patterns. Let dry for 10 minutes, then layer more colors and add details. Use the black SKRIB to number the pouches from 1 to 24.



2 With the scissors, cut 13 pieces of string, each 60 cm long. Wrap the 12 pieces so that both ends are not the same length, and tie them. Tie the last string on each end of the branch to be able to hang it up.



3 With the stapler, attach one pouch to each string in a «cross» shape for a more aesthetic result.



4 Final look of the attached pouches.



5 Use the gold SKRIB to make small dots on the branch to decorate it.



# 12. CHRISTMAS TABLE CENTERPIECE

## Your materials

SKRIB acrylic  
Christmas shades  
Large wooden slice  
Glass candle holders  
Pencil



1 With a pencil, draw the outlines of the design. In this case, a two-tone background on the wood and some trees in geometric shapes.



2 Color the different areas and let dry for 5 minutes.



3 Decorate the trees and add details, leaving 2 empty spaces for the candle holders.



4 Make sure the candle holders are clean and grease-free. Decorate the candle holders.

pêbêo



**SKRIB**  
AQUARELLE  
WATERCOLOUR

6+

# SKRIB Watercolor Tutorials with and without Drawing Gum







# 13. FUNNY HAND

## Your materials

SKRIB Gouache  
yellow, green, red, blue, black

White watercolor paper  
and black paper

Drawing Gum marker  
Water brush  
Scissors  
Eraser  
Palette or cardboard plate  
Glue



1 With the Drawing Gum marker, trace the child's hand on the watercolor paper. Let dry for 5 minutes.



2 Place blue, red, and yellow gouache from the SKRIB markers onto the palette. Use the water brush to pick up color and fill in the hand. As you color, let water flow from the brush to create gradients. Let dry for 15 minutes.



3 Use the eraser to remove the Drawing Gum, then cut out the hand, keeping the outline.



4 Glue the cut-out hand onto the black paper.



5 Decorate both the black paper and the hand to turn it into a character.



# 14. TROPICAL CANVAS

## Your materials

SKRIB Gouache  
neon pink, yellow, green, orange,  
red, gold, blue, purple

Large brush and water

30x30 cm canvas board

Drawing Gum marker

Eraser



1 Use the Drawing Gum to draw large leaves of different shapes all over the canvas. Let dry for 2 minutes. Get inspired by the Super Guide for the leaf designs.



2 With the brush, apply water to the canvas, then tap the SKRIB marker tips repeatedly into the water to release color. Spread the colors around with the brush.



3 Fill the entire canvas board.



4 Shake the markers vigorously over the canvas to create splashes that will spread in the wet surface. Let dry for 15 to 20 minutes.



5 Rub off the Drawing Gum with the eraser.



# 15. FUNNY WATER DRAWINGS

## Your materials

- SKRIB Gouache yellow, pink, blue, black
- Watercolor paper
- Water brush



1 Fill the water brush and make generous, random water shapes on the paper : waves, spirals, splashes.



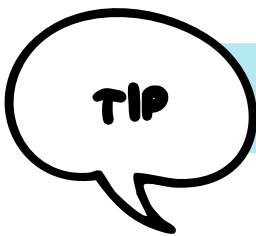
2 Touch the water with the tip of the pre-primed SKRIB markers to release and spread the color.



3 Let dry for about 20 minutes or more, until all the water is absorbed. You can dab a bit of the color with a tissue if needed.



4 Use the black SKRIB to add details and transform the spots into decorations or characters.



Depending on the amount of water used, it may help to double the paper to avoid it warping too much.





# 16. INVITATION CARD

## Your materials

SKRIB Gouache  
yellow, blue, pink, black

A5 watercolor paper

Drawing Gum marker

Palette or cardboard plate

Round foam stamp

Eraser



1 Draw horizontal waves all over the page with the Drawing Gum. Let dry for 5 minutes.



2 Apply blue gouache from the SKRIB onto the palette, add two or three drops of water. Pick up the diluted gouache with the round foam stamp. Dab it on the paper to create a circle of color. Repeat to make more circles, spaced out to leave room for the other colors.



3 Do the same with yellow and pink. Let dry for 15 minutes.



4 Rub away the Drawing Gum lines with the eraser.



5 Finish the card by writing HAPPY B-DAY in a graphic style using the fine tip black SKRIB.



TIP

Depending on the amount of water, doubling the paper can help prevent the card from warping too much.



# SUNSHINE CARD

## Your materials

SKRIB Gouache  
yellow, orange, neon pink, red, black

Square watercolor paper

Drawing Gum marker

Palette or cardboard plate

Eraser

Water brush

Pencil



With the pencil, draw a frame and then 3 arcs inside it. Inside each arc, write "Hello", "Sun" and "Shine" with the Drawing Gum. Let dry for 5 minutes.



Place the SKRIB colors on the palette. Pick up each color with the brush while letting water flow to create a watercolor effect. Fill in the arcs.



Do the same with the neon pink and orange gouache. Paint the frame outline in yellow. Let dry for 15 minutes.



Rub off the Drawing Gum and erase the pencil lines with the eraser.



Finish the card by tracing the frame and the word "sun" with the fine tip black SKRIB.

### TIP

Depending on the amount of water, doubling the paper can help prevent the card from warping.





# TOO COOL CARD

## Your materials

SKRIB Gouache  
yellow, orange, neon pink,  
blue, green, red, black

Water brush

Pencil

Eraser

Ruler

Watercolor paper 10x15 cm

Drawing Gum marker

Palette or cardboard plate



1 With a pencil, write the word "STAY" in the center of the paper. Use a ruler to help center and align the drawing.



2 With the Drawing Gum marker, draw pairs of small circles to create the eyes of the little characters. Let dry for 5 minutes.



3 Use the yellow SKRIB to fill in the letters of "STAY". Let dry for 5 minutes.



4 Place the SKRIB colors on the palette. Pick up each color with the water brush, letting water flow for a watercolor effect, and paint the characters. Let dry for 15 minutes.



5 Rub off the Drawing Gum with the eraser. Carefully erase the pencil lines.



6 Draw facial expressions, add the word "cool" and other small decorations around with the black SKRIB fine tip. Use the Super Guide as inspiration for the designs.





# 19.

## POETIC BOOKMARK

### Your materials

SKRIB Gouache  
yellow, blue, pink, black

A5 watercolor paper

Drawing Gum marker

Palette or cardboard plate

Round foam stamp

Eraser



1 With the Drawing Gum marker, draw intersecting curved lines in the center of the paper. Let dry for 5 minutes.



2 Place some blue gouache from the SKRIB on the palette. Use the water brush to pick up the color and fill each shape created by the lines. Let water flow from the brush to create gradients. Repeat this technique at the top and bottom of the paper. Let dry for 15 minutes.



3 Rub off the Drawing Gum lines with the eraser.



4 Using the orange SKRIB tip, draw lines of small dots in various sizes depending on pressure. Let dry for 5 minutes.



5 Finish the card by adding graphic shapes. Write «Pause» at the top and «Reading» at the bottom using the black SKRIB fine tip.

**TIP**

Depending on how much water you use, doubling the paper can help avoid warping.

# 20. CHRISTMAS CARD

## Your materials

SKRIB Gouache in Christmas shades  
Thick black paper 12x18 cm  
Watercolor paper 10x15 cm  
Drawing Gum marker  
Pencil  
Scissors  
Glue  
A brush and water  
Palette or cardboard plate  
Eraser



1 Using the white SKRIB gouache, make dots on the black paper - more concentrated at the bottom, and a few across the rest of the sheet.



2 On the watercolor paper, draw a Christmas tree with a pencil, filling the whole space. Inside the tree, make dots with the Drawing Gum. Let dry for 2 minutes.



3 Put green and brown gouache on the palette using the SKRIB markers. With the water brush, paint the tree branches in green and the trunk in brown. Let dry for 10 minutes.



4 Rub off the Drawing Gum with an eraser.



5 Cut out the tree.



6 Glue the tree onto the black paper. With the red SKRIB, draw baubles on the tips of the branches. With the gold SKRIB, draw a star at the top of the tree and write "Merry Christmas".



**pēbēo**



# **SKRIB Gouache Tutorials with and without Drawing Gum**







# 21. CAT PUPPET

## Your materials

SKRIB Gouache  
pink, yellow, green, orange, red,  
brown, blue, purple, black and white

Cardboard paper

Drawing Gum marker

Scissors

Pencil

Glue

Eraser

Yarn

Wooden craft stick



1 With a pencil, draw the cat using simple shapes.



2 With the Drawing Gum, draw spirals all over the cat's body and tail. Let dry for 5 minutes.



3 Cover the cat's body and tail with strips of different colors. Let dry for 15 minutes.



4 Decorate the cat's head and let it dry. In the meantime, rub off the Drawing Gum with the eraser.



5 Finish decorating the cat by outlining it and drawing the eyes in black, then cut it out.



6 Glue pieces of yarn to make the whiskers. Glue a craft stick to the back of the cardboard.



# 22. HAPPY MOTHER'S DAY CANVAS

## Your materials

SKRIB Gouache  
pink, yellow, blue, red

Canvas board 13x18 cm

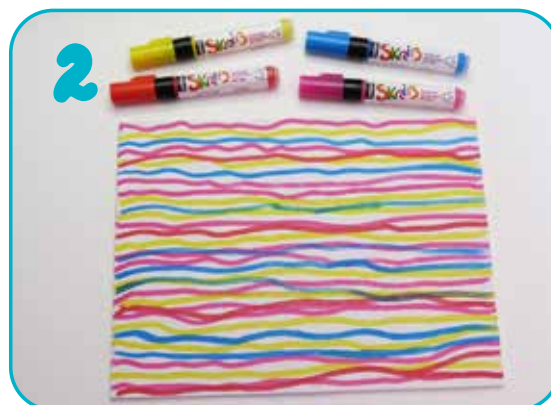
Drawing Gum marker

Eraser

Large brush



1  
An adult writes "HAPPY MOTHER'S DAY" in the center using Drawing Gum, and the child writes "MOM" below it. Let dry for 5 minutes.



2  
Cover the whole canvas with horizontal lines.



3  
With the large brush and water, blend the middle lines using a watercolor effect, without mixing too much. Let dry for 20 minutes.



4  
Remove the Drawing Gum with the eraser.



# 23. DECORATIVE NUMBER CHART

## Your materials

SKRIB Gouache  
pink, yellow, green, orange,  
red, brown, blue, purple

A4 watercolor paper

Drawing Gum marker

Aquabrush

Round foam stamp

Straw

Eraser

Paper towel



Draw the numbers using Drawing Gum. Let dry for 2 minutes.



On number 2, draw a heart and fill it in with gouache, being careful not to press on the Drawing Gum.  
On 4, draw tight lines to cover the number.  
On 5, make dense dots. Let dry for 2 minutes.



On 3, add a water puddle and dab the SKRIB tip into it repeatedly.  
On 7, use the same technique as for 3, in purple, and dab off immediately with a paper towel.



On 8, place yellow at the top and red at the bottom.  
With the water brush, gently blend both colors with water...  
On 9, repeat the water technique from 3 but with green and more water, then blow through a straw to spread the color.  
Let dry for 20 minutes.



For 6: use the round foam stamp to apply yellow gouache diluted with water. Clean the stamp.  
Without letting the yellow dry, dab blue gouache overlapping the yellow and the rest of the number.  
Let dry for 5 minutes.



Rub off the Drawing Gum with an eraser.

**TIP**

Make sure everything is completely dry before removing the Drawing Gum.



# 24. MOOD OF THE DAY

## Your materials

SKRIB Gouache  
pink, yellow, green, red,  
orange, blue, black

A4 bristol paper

Scraps of bristol paper

A4 foam board

Ribbon

12x12 cm plastic sleeve

Glue

Tape



1 Use the black SKRIB to draw a centered circle about 8 cm in diameter.



2 Tape the piece of plastic over the circle, centering it carefully.



3 Tear strips from the bristol paper scraps and glue them around the plastic square to hide the tape.



4 Decorate the torn paper frame. Write the title at the top, and draw small colored circles. Let dry for 5 minutes.



5 Use the black SKRIB to draw different facial expressions inside the colored circles. Use the Super Guide for inspiration.



6 On the back of the bristol paper, glue the foam board, placing the ribbon between both layers.

### TIP

Draw your mood using SKRIB and have fun erasing and starting again. Even after drying, gouache will always wipe off with a damp cloth.

# 25. MY CHILDHOOD FRAME

## Your materials

SKRIB Gouache  
pink, yellow, green,  
blue, red, black

Cork frame

ID photos from different ages

Push pins



1 Color the frame. To avoid going over the edge, slide a scrap sheet under the frame edges.



2 Draw a rainbow across the frame. Let dry for 5 minutes.



3 The parent pins the photos and draws the bodies to match the faces. Let dry for 5 minutes.



4 Write the child's name and add patterns using the Super Guide as inspiration.



# 26. TALKING LEAVES

## Your materials

SKRIB Gouache  
pink, yellow, green,  
red, brown, blue, purple,  
white, gold

A4 thick paper

Dried leaves

A4 frame with glass pane

Glue



Decorate the leaves using SKRIB markers with graphic patterns that follow the shape of each leaf.



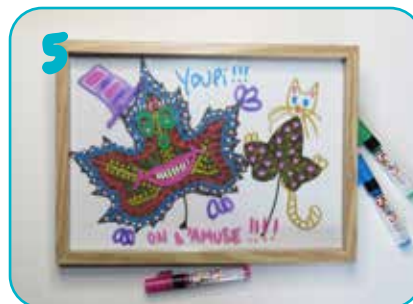
Cover the leaves entirely.



Once finished, let dry for 5 minutes.



Glue the decorated leaves onto the thick paper and place everything in the frame.



On the glass, decorate again by adding little characters.

## ASTUCE

Let the leaves "speak" however you wish!  
Even after drying, gouache will always wipe off glass with a damp cloth.



# 27. GRAPHIC PROJECT

## Your materials

SKRIB Gouache  
one color per child

13x18 cm canvas boards

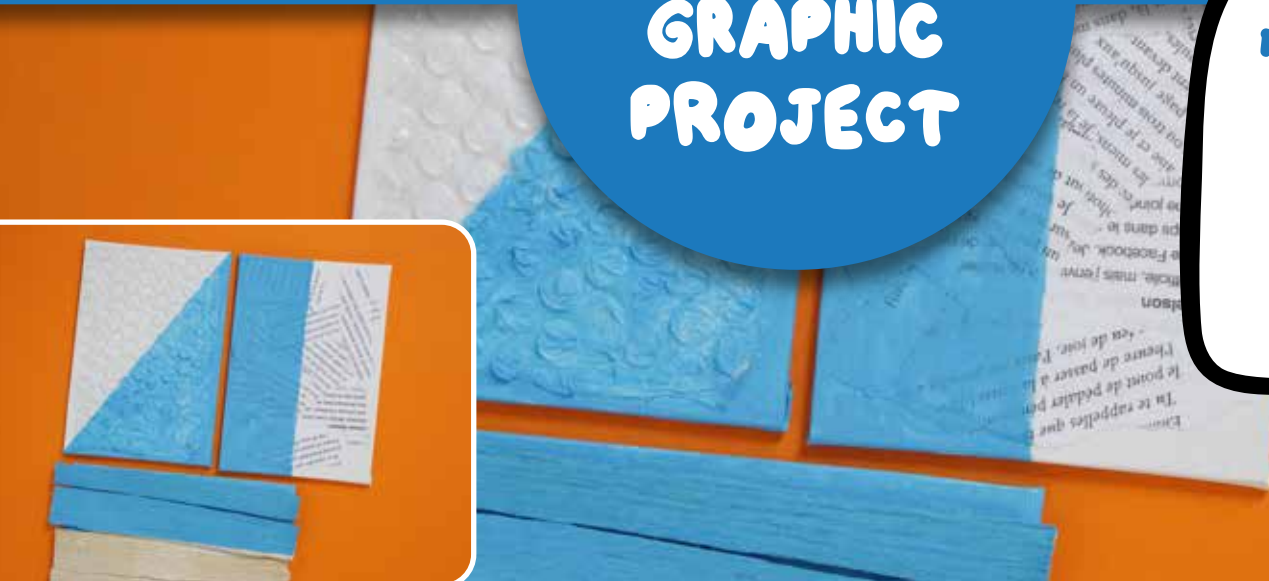
Book pages

Wooden craft sticks

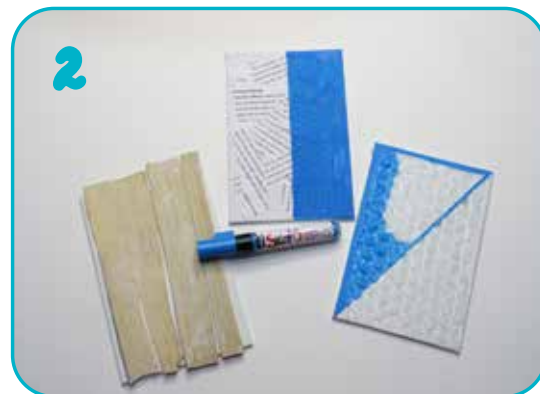
Bubble wrap

Ruler

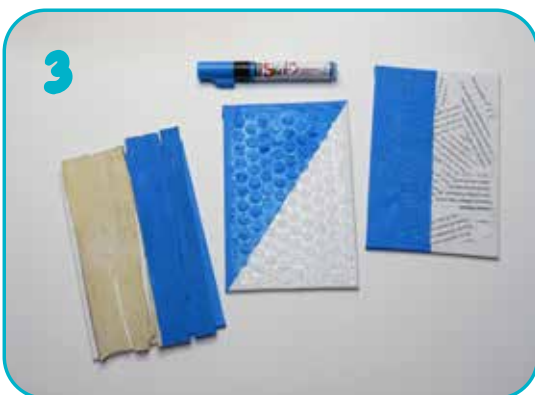
Glue



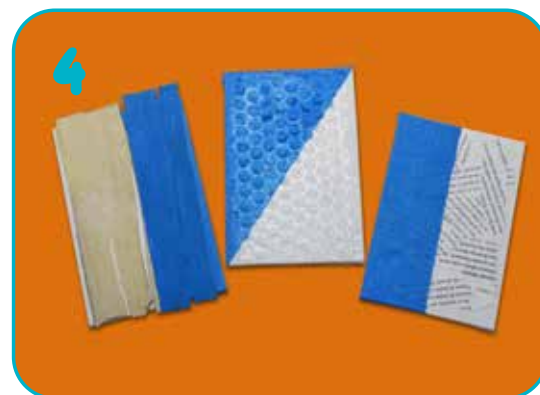
1  
Glue one texture/material onto each canvas board. Let dry for 5 minutes.



2  
On each half, color using the marker in a monochrome style. Wait 5 to 10 minutes depending on the surface before adding another layer.



3  
This activity can be done with several children, each choosing their own color. Combine the shapes and colors to create a colorful graphic mural and have fun assembling them.



# 28. BIRD PLATE

## Your materials

SKRIB Gouache  
brown, yellow, blue, red  
Paper plate used for  
color priming  
Blank paper plate  
Brads (paper fasteners)  
Scissors  
Glue



Use the plate with all the SKRIB color priming marks as the base.



Cut the blank plate to create the eyes, beak, and wings of the bird.



Color each part.

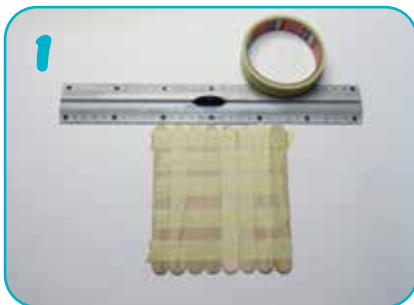


Glue the eyes and the beak in place.  
Attach the wings with a brad on each side.

# 29. PUZZLE DRAWING

## Your materials

SKRIB Gouache  
pink, yellow, green,  
red, brown, blue  
Wooden craft sticks  
Masking tape  
Ruler



1 Line up the sticks using the ruler, placing them tightly next to each other. Tape them together to create a solid surface.



2 Flip the sticks over and draw your design.



3 Let dry for 5 minutes before adding color layers.



....



5 Remove the tape and have fun mixing and reordering the sticks like a puzzle.



# 30. CHRISTMAS WINDOW

## Your materials

SSKRIB Gouache  
Christmas colors

Printed designs  
Tape  
Scissors



Print the design inspirations from the Super Guide. Cut out the desired shapes and tape them to the outside of the window, where you want to place them.



Using SKRIB gouache, trace the designs from the inside of the window, following the lines of the printed drawings.



Repeat as many times as you like with other designs.



Add extra drawings directly onto the glass without tracing to complete the scene - like a garland to hang the ornaments and the Christmas stocking.



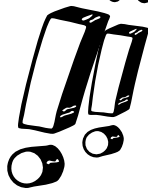
Remove the printed pages from outside.

## TIP

Even when dry, SKRIB gouache always wipes off glass with a damp cloth. Use the Super Guide for other celebrations too, like Halloween or Easter!

**pébéo**

**YOUR  
TURN TO  
CREATE**



**Let's gooooo!**

**SkriB**  
AQUARELLE  
WATERCOLOUR



**SkriB**  
GOUACHE  
POSTER PAINT

drawing gum  
gomme à dessiner



**SkriB**  
ACRYLIQUE  
ACRYLIC

**SHARE YOUR CRÉATIONS  
ON OUR SOCIAL MEDIA !**



Fait en France par Pébéo  
Made in France by Pébéo  
CS 10106 - 13881 GEMENOS  
CEDEX FRANCE  
TEL: 33 (0)4 42 32 08 08

[www.pebeo.com](http://www.pebeo.com)